

Cisco Network Assistant 3.0 for the Catalyst Express 500 Series

At-A-Glance

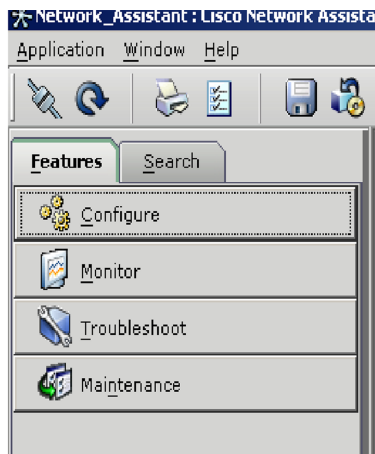
Cisco® Network Assistant 3.0 provides a fast and easy way to manage the new Cisco Catalyst® Express 500 Series Switch for small to medium-sized businesses (SMBs). Because the Catalyst Express 500 Series does not use a command-line interface (CLI), all network management for this switch must be done using Cisco Network Assistant. Cisco Network Assistant has specialized features for this switch to keep network management smart, simple, and secure.

Cisco Network Assistant offers centralized management and configuration of Cisco SMB-Class networks to help simplify deployment and ongoing maintenance by leveraging Cisco Smartports technology. Cisco® Network Assistant is a PC-based network management application optimized for networks of small and medium-sized businesses with up to 250 users.

Through a user-friendly GUI, users can seamlessly apply common services such as configuration management, inventory reports, password synchronization and Drag and Drop IOS® Upgrade across Cisco SMB-Class switches, routers and access points. Cisco Network Assistant is available at no cost and can be downloaded from Cisco.com.

Task-Based Menu

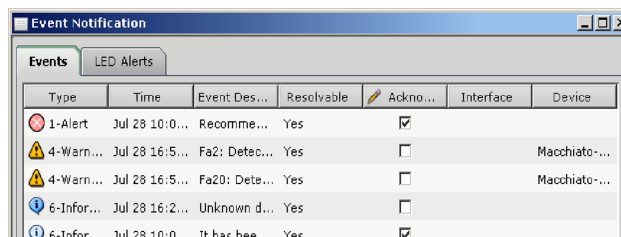
Navigating through Cisco Network Assistant is intuitive and direct. The main tool bar is divided into four categories for easy access to the most important tasks and features: Configure, Monitor, Troubleshoot, and Maintenance. Cisco Network Assistant now supports keyboard shortcuts for easy navigation throughout the application, allowing users the option to navigate with a mouse or keyboard.



Cisco Network Assistant

Troubleshooting Advisor

Cisco Network Assistant now offers a new level of simplified troubleshooting whereby potential network issues are automatically identified and brought to your attention through a graphical trend chart. Examples include cabling issues, configuration errors, and potential problems in your network. It then provides you an explanation of the problem and the corrective action is as simple as a single click of the mouse.



Type	Time	Event Des...	Resolvable	Ackno...	Interface	Device
1-Alert	Jul 28 10:0...	Recommen...	Yes	<input checked="" type="checkbox"/>		
4-Warn...	Jul 28 16:5...	Fa2: Detec...	Yes	<input type="checkbox"/>		Macchiat...
4-Warn...	Jul 28 16:5...	Fa20: Det...	Yes	<input type="checkbox"/>		Macchiat...
6-Infor...	Jul 28 16:2...	Unknown d...	Yes	<input type="checkbox"/>		
6-Infor...	Jul 28 10:0...	It has bee...	Yes	<input checked="" type="checkbox"/>		

Secure Wireless

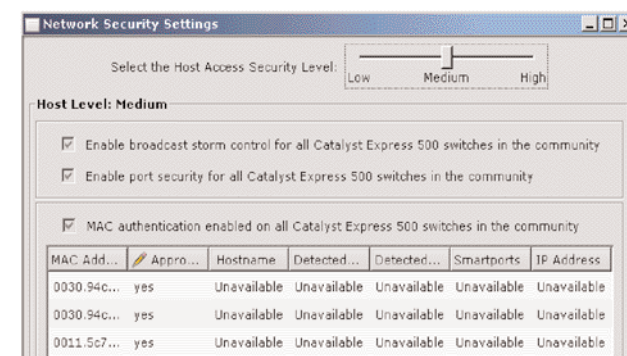
As wireless LANs (WLANs) become ubiquitous, enabling security on the WLAN is a requirement, even for small businesses. Taking advantage of the intelligence built into the Catalyst Express 500 Series, Cisco Network Assistant guides you through the configuration of setting up Service Set Identifier (SSID) and Wired Equivalent Privacy (WEP) on Cisco Aironet® WLAN access points.

Drag-and-Drop Cisco IOS Software Upgrade

This function provides a consistent and simple approach to Cisco IOS® Software upgrades for devices in communities. Simply drag the software icon from the desktop and drop it onto the switch, router, or access point you wish to upgrade.

Security Slider

Easily enable access and network security on your Catalyst Express 500 Series switches by simply choosing the desired level—Low, Medium, or High—on the Security Slider in Cisco Network Assistant. The Low setting (default) provides port security and protection against broadcast storms. The Medium setting adds MAC address authentication in addition to port security and broadcast storm control. Finally, the High setting enables 802.1x authentication for media-level access control, offering the capability to permit or deny network connectivity, and control VLAN access based on user or machine identity.



Smartports Advisor

Cisco Smartports technology provides a set of common configurations that help network security and quality of service (QoS) to be accurately enabled for Cisco network devices. With Smartports Advisor, the Cisco Catalyst Express 500 Series Switch automatically discovers connected Cisco Systems® devices and suggests appropriate Smartports roles. Unique to the Catalyst Express 500 Series are additional Smartports roles for third-party devices such as servers, and the ability to detect misconfigured ports.